



FURCO
INDUSTRIAL CO., LTD.

CATALOGUE



Made in Taiwan

Knobs



FURCO
INDUSTRIAL CO., LTD.

Material

Zn : Zinc (zamak)

Al : extruded Aluminum, die-casted Aluminum

Cu : Brass

St : steel, carbon steel

SUS: stainless steel

POM

How to read

396 | Zn >> 396 : item number, Zn : Material
40,64,... >> size in mm without ["], inch wih ["],
for handles usually means
size between central hole and central hole

862 | Zn >> 862 : item number, Zn : Material
D16xH21 >> D : diameter, H : Height

Plated colors

C : chrome plating (polished chrome)

DC : mat chrome

SC : Satin chrome

BRC : brushed chrome

N : nickel plating (polished nickel)

NBR : nickel brushed

DN : mat nickel

SN : satin nickel

B : black nickel

AB : antique bronze brushed

AE : antique brass brushed

Coated colors

W : white

BM : black

SI : silver

AL : almond

GRE : grey

Anodized colors

We provide custom-made colors no matter on plating or coating.

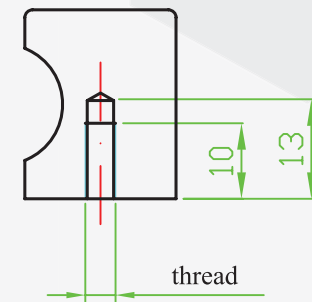
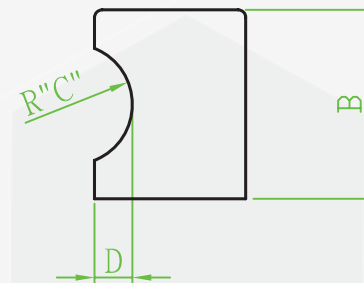
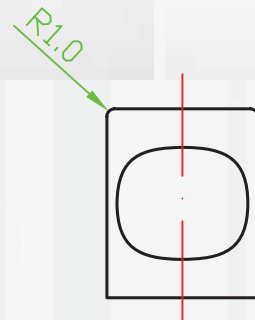
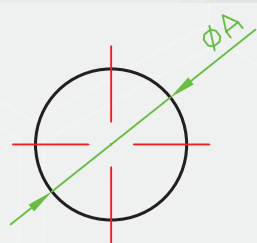
Contact us if you need special colors.



FURCO
INDUSTRIAL CO., LTD.



item number	A	B	C	D
52-00660-303XXX-1	15	22	6	3
52-00660-307XXX-1	20	25	8	5
52-00660-309XXX-1	25	30	9	6
52-00660-310XXX-1	30	30	10	9





FURCO
INDUSTRIAL CO., LTD.



8846 | Al, Zn
D31 × H38



8847 | Al, Zn
D23 × H30





FURCO
INDUSTRIAL CO., LTD.



887 fish | Zn
50Lx25H mm

888 seahorse | Zn
65Lx26H mm





FURCO
INDUSTRIAL CO., LTD.



607 | Cu
D24 × H27
D25 × H27



609 | Cu
D24 × H33



FURCO
INDUSTRIAL CO., LTD.



610 | Cu
D29 × H22
D31.5 × H22
D32 × H22



622 | Cu
D25 × H23
D35 × H34



626 | Cu
D25 × H26
D30 × H31



FURCO
INDUSTRIAL CO., LTD.



613 | Cu
D30 × H23, D25 × H23
D30 × H24, D35 × H25
D40 × H26



648 | Cu, Zn
D32 × H26, D34 × H27
D34 × H23.5



FURCO
INDUSTRIAL CO., LTD.



615 | Cu
D25 × H24, D30 × H28
D32 × H24, D40 × H30



621 | Cu
D24 × H20



FURCO
INDUSTRIAL CO., LTD.



861 | Cu
D18xH14



623 | Cu
D20 × H18
D25 × H20
D30 × H22



624 | Cu
D17 × H17
D17 × H19
D30 × H23



FURCO
INDUSTRIAL CO., LTD.



646 | Cu
D18 × H24



807 | Cu, SUS
D19 × H20
D25 × H25
D20 × H24



704 | Cu
D32 × H31



FURCO
INDUSTRIAL CO., LTD.



678 | Cu, Zn
D28 x H29, D30 x H29, D32 x H31, D38 x H36



649, 649H | Cu, Cu Hollow
D32 x H30, D38 x H35



FURCO
INDUSTRIAL CO., LTD.



652 | Cu
D30 × H22



683 | Cu
D31 × H39



FURCO
INDUSTRIAL CO., LTD.



670 | Cu
D30 × H26



671 | Cu
D31 × H26



FURCO
INDUSTRIAL CO., LTD.



740 | Al, Zn
D29 × H37



741 | Cu, Zn
D38 × H28.5





FURCO
INDUSTRIAL CO., LTD.



802 | Cu, Al
D14 × H22



801 | Cu
D20 × H26
D30 × H30



803 | Cu, Al
D13 × H22.5



FURCO
INDUSTRIAL CO., LTD.



806 | Cu, Al
D14 × H22



852 | Al
L31 × H28



FURCO
INDUSTRIAL CO., LTD.



8801 | Al
D30 × H26



824 | Cu
D25 × H20



FURCO
INDUSTRIAL CO., LTD.



862 | Zn
D16 × H21



FURCO
INDUSTRIAL CO., LTD.



878 | Zn
D28 × H24
D33 × H27



894 | Cu
D14 × H17